

JALO2 SAS ESD JIJI446



S1P CI SRC
EN ISO 20345:2011
35 to 48



- **Recycled microfiber upper**
- **PU/PU sole Biomass Balance de BASF®**
- **ESD / Dissipative**
- **Polymer toe cap type B and midsole no metallic**



- ❖ Urban sport-style safety shoe incorporating **MAXI-Soft Duo™** anti-fatigue technology designed for work stations that require standing for long periods (Upright or sustained activity).
- ❖ Safety shoe protecting the electronic devices against electrostatic discharge phenomena. Electrostatic dissipative shoes ESD Environmental Class II tested according to **EN 61340-4-3** and **EN 61340-5-1**.
- ❖ Upper in **recycled microfibre, velvet look** (50% recycled polyester), perforations on the sides and top for better foot ventilation. Black color. Fluorescent markings on the back of the heel.
- ❖ Upper lined in breathable **3D Surf** mesh with honeycomb structure to improve the peripheral ventilation of the foot, dries out rapidly.
- ❖ Padded tongue for good instep protection, combined with two side bellows to prevent any dirt from getting into the boots.
- ❖ Padded ergonomic collar in compact flexible foam, lined for extra comfort and better ankle and Achilles tendon protection.
- ❖ Lace up on five pairs of no metallic eyelets. Black laces 120 cm.
- ❖ Perforated insole for enhanced comfort : **MAXI-Soft Duo™ Green** composed of a **soft BASF® Dynamic PU** midsole with heat sensitive memory foam and a maximum size **BASF® Elastopan insert** that improves weight distribution by reducing pressure points and absorbs and relieves body stress associated with a prolonged standing working position and when walking. Anatomical, breathable and fitted with the **Link ESDTM system**, an innovative multi-contact, static electricity dissipater. (Patent pending).
- ❖ Ergonomic shoe, with broad synthetic polymer toe cap **Springtane-B™**. Impact resistance to 200 Joules. Minimum height after test $\geq 4\text{mm}$ in relation to the Type A toe cap in accordance with Standard 22568-2 : 2021.
- ❖ Stab-resistant structural insole and liner in **FleXtane™ By Jallatte ESD** (50% recycled polyester), in compliance with standard 22568-4 : 2021, antistatic, **100% composite**. Sewn directly onto the upper and covering **100% of the foot for total protection**.
- ❖ Heel stiffener to reinforce the heel seat.
- ❖ **BASF® PU / PU sole BMB | BioMass Balance Certifié EU-REDcert²** with an urban sport design, linear profile and excellent slip resistance. Extremely light and flexible support base.



Slip resistance tests results EN Standard :
EN ISO 20345 : 2011 **Requirement SRC**

SRA Test ground : ceramic / lubricant : water
and detergent
On flat **0,62** (>0,32) – On the heel **0,48** (>0,28)

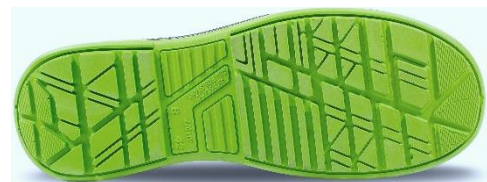
SRB Test ground steel/lubricant : glycerine
On flat **0,23** (>0,18) – On the heel **0,19** (>0,13)



BMB
EU-REDcert²

- 100% substitution of fossil resources with **renewable and sustainable** raw materials.
- Independently certified approach.
- Reduction of greenhouse gas emissions.
- Same properties and quality level as traditional safety shoes.

Weight	Gross weight (42) : 1356 g / Net weight (42) : 1140 g			
Size	35 to 39	40 to 42	43 to 45	46 to 48
Packaging	5 pairs	10 pairs		5 pairs
Box shoes (mm)	306 x 192 x 114		340 x 210 x 133	
Cartons (mm)	590 x 210 x 320	590 x 410 x 320	685 x 423 x 347	695 x 227 x 366



www.jallatte.com